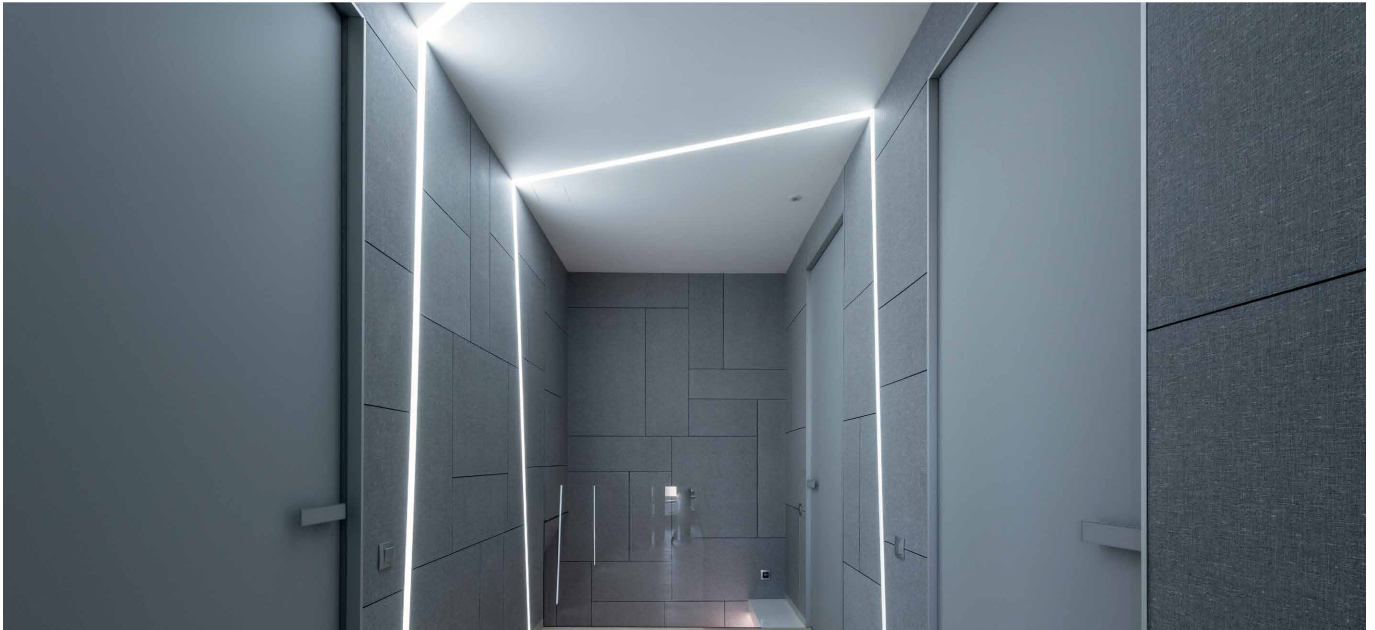


RHO 1

R1.

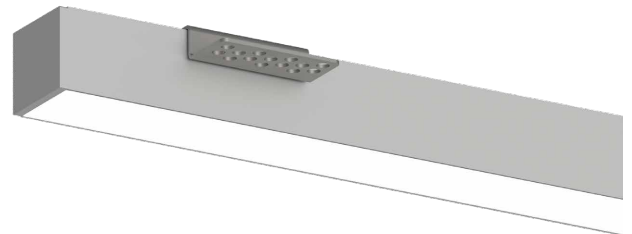


Decorated anodised aluminium lamp complete with brushed or microprismatic diffuser and high-brightness LED source with a high Lumen/Watt ratio. Suitable for primary residential, retail, large-space and general lighting. Flush-mounted installation onto plasterboard or brick, also supplied with non-returnable cover for plastering.

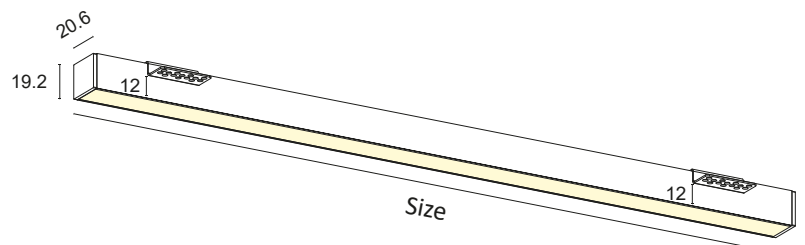
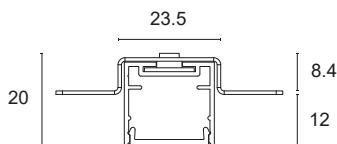
Constant 24Vdc voltage supply
Parallel connection, 50 cm cable

Constant voltage power supplies page 237
Dimming Accessories page 249

 **MADE IN ITALY**



Max. milling cut 23.5mm



BASIC CODES

R1.

FINISHES

- 1** White
 - 2** Matt black
 - 7** Brushed aluminium
- *Other finishes on request.

SIDE SUPPORTS

- 1** White
- 2** Matt black
- 7** Brushed aluminium

SIZE

- C** 500mm
- D** 600mm
- E** 700mm
- F** 800mm
- G** 900mm
- H** 1000mm
- I** 1200mm
- J** 1300mm
- K** 1400mm
- L** 1500mm
- M** 1800mm
- N** 2000mm
- O** 2300mm
- P** 2500mm
- Q** 2800mm
- R** 3000mm

LED COLOUR

- BN** 4000K
 - BC** 3000K
 - CC** 2700K
- *Strip also available coloured, Dynamic White, RGB and RGBW.

POWER

- | | | | | | | |
|-----------|---------|----------|----------|-------|--------|---|
| E | 16.8W/m | 2000Lm/m | 140LED/m | S2835 | CRI>85 |  |
| E+ | 16.8W/m | 2000Lm/m | 140LED/m | S2835 | CRI>90 |  |
| F | 20.2W/m | 2500Lm/m | 168LED/m | S2835 | CRI>85 |  |
| F+ | 20.2W/m | 2500Lm/m | 168LED/m | S2835 | CRI>90 |  |
| G | 25W/m | 3500Lm/m | 160LED/m | S2835 | CRI>80 |  |
| L+ | 28W/m | 3500Lm/m | 160LED/m | S2835 | CRI>90 |  |
| H | 30W/m | 4500Lm/m | 240LED/m | S2835 | CRI>80 |  |

*Energy class referring to light source

DIFFUSER

- M** MICROPRISMATIC
- S** BRUSHED

Code example:

RHO 1 + White + Side supports white + 1000mm + 3000K + 25W/m CRI>80 + Brushed diffuser = Code: R1.11HBCGS